

Stones-Crossing-Rd-W



135

S State Rd-135

Co-Rd-200-W

Woodland Stream

Waterloo

Smokey-Row-Rd



Tracy-Rd

State Rd-135



Honeycreek-Rd

Lake

Lake 2



W-Whiteland-Rd

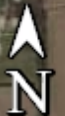
Whiteland-Rd

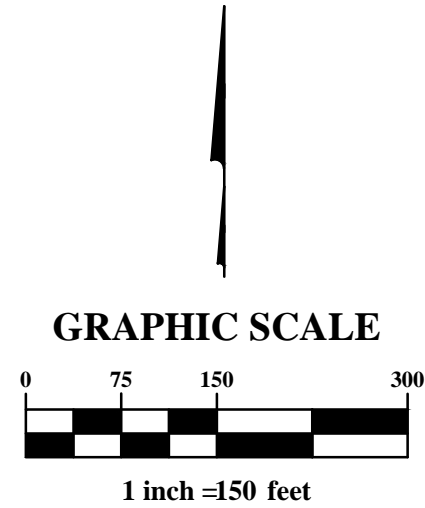
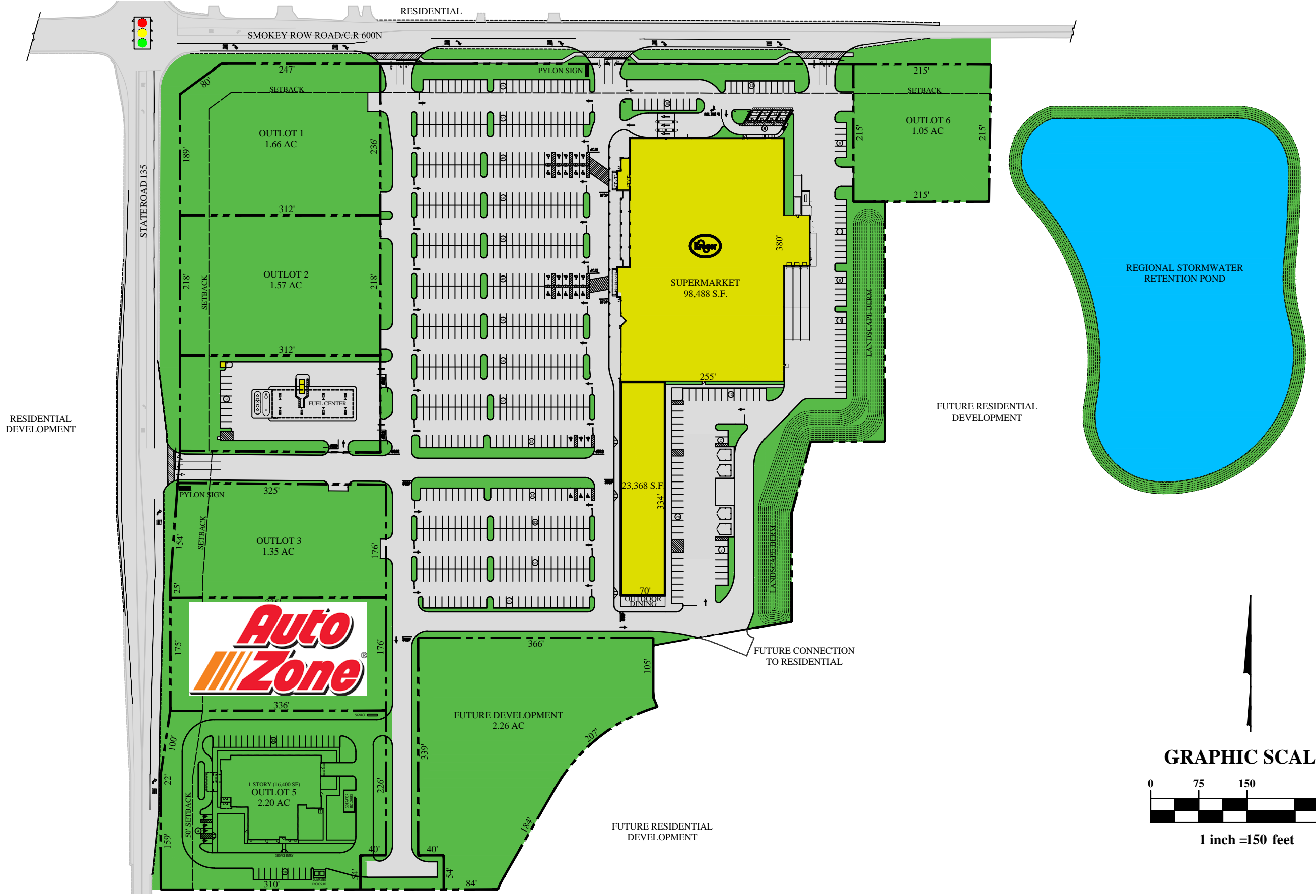
W-500-N

Google Earth

144

1 mi



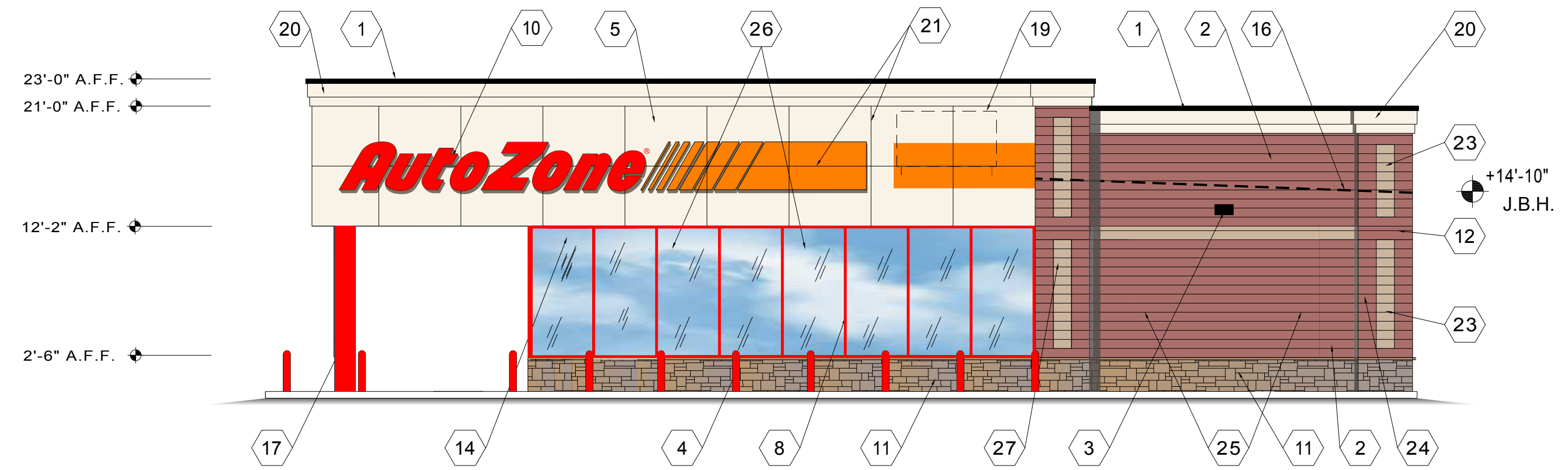


Engineers, Surveyors, Planners, Scientists
 JOB NUMBER: 20150547

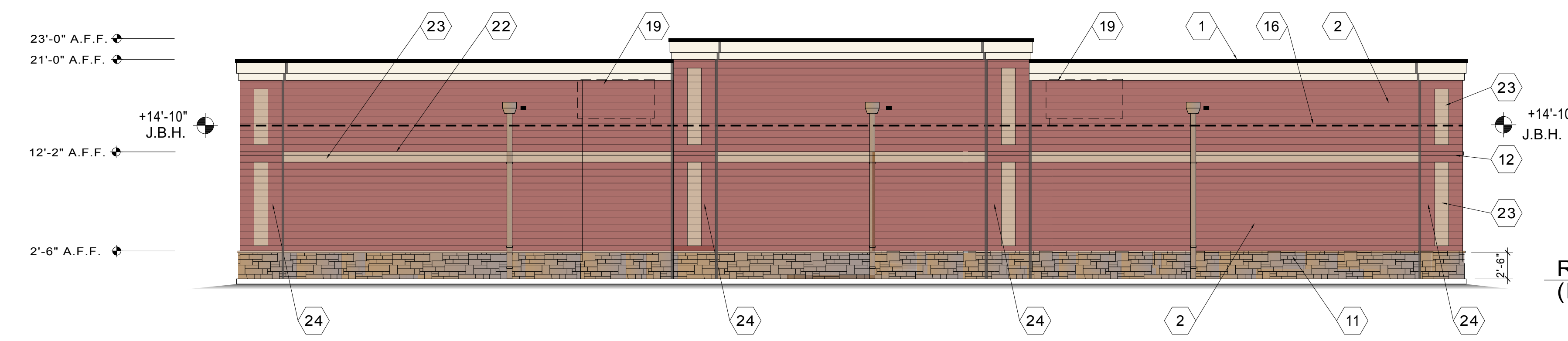
Center Grove Marketplace

Greenwood, Indiana

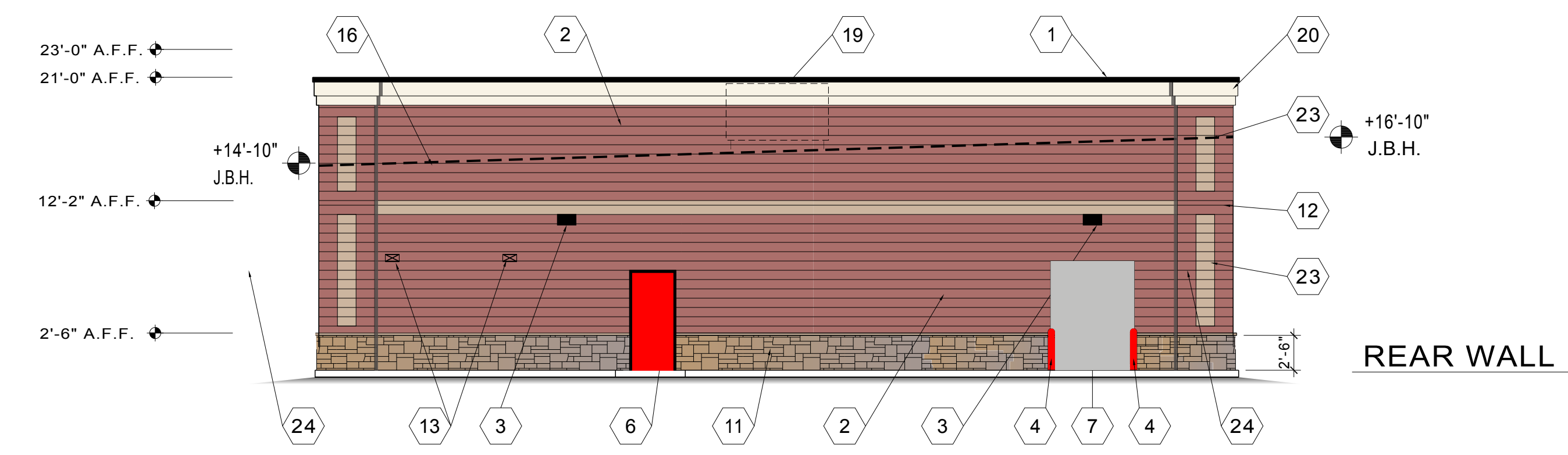
February 09, 2016



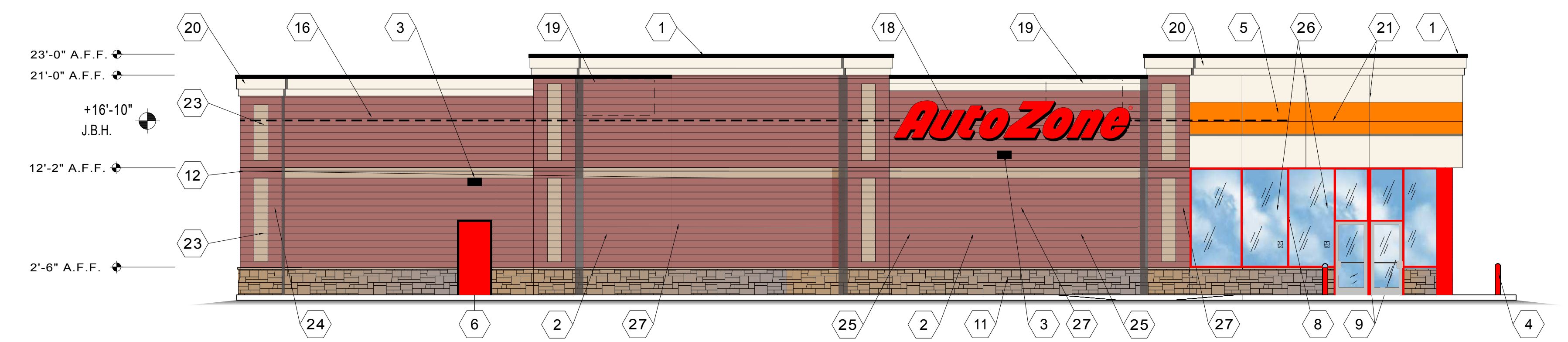
FRONT WALL



RIGHT SIDE WALL (LOW SIDE)



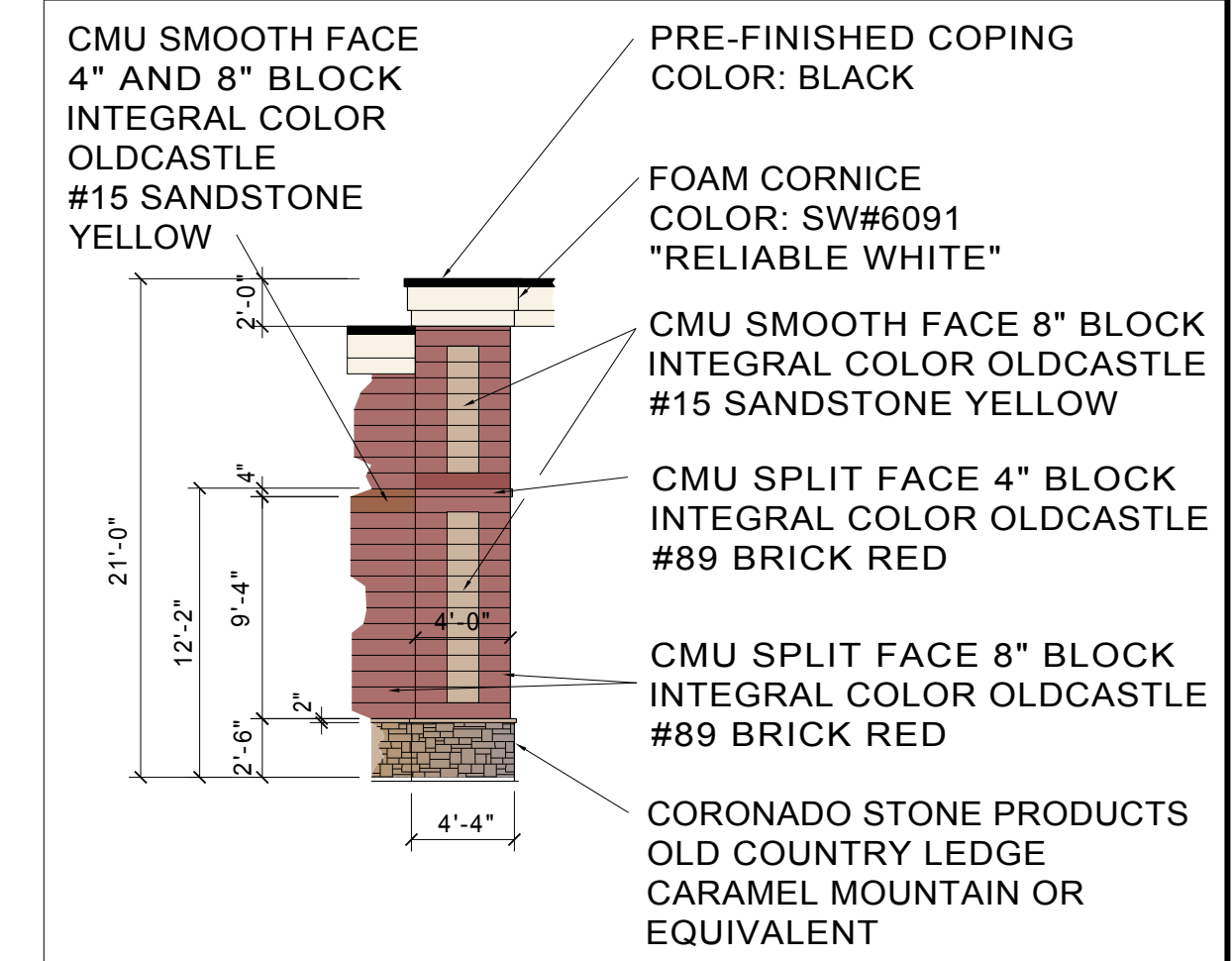
REAR WALL



LEFT SIDE WALL (HIGH SIDE)

- 1 PREFINISHED ALUMINUM COPING
COLOR: BLACK
- 2 CMU SPLIT FACE 8" BLOCK
INTEGRAL COLOR OLDCASTLE #89 BRICK RED
- 3 WALL MOUNTED LIGHT FIXTURE - BRONZE FINISH
- 4 PIPE GUARD WITH RED SLEEVE
- 5 STUCCO FINISHED SOFFIT PAINTED
COLOR: SW#6091 RELIABLE WHITE
- 6 PAINT MAN DOOR TO MATCH WALL & FRAME BLACK
- 7 DO NOT PAINT OVERHEAD DOOR PAINT
ANGLES BLACK
- 8 ALUMINUM STOREFRONT - RED KYNAR FINISH
- 9 GLASS AND ALUMINUM DOORS - CLEAR
ANODIZED FINISH
- 10 FRONT WALL SIGN - 42" RS CHANNEL LETTERS
- 11 CORONADO STONE PRODUCTS-OLD COUNTRY LEDGE
CAMEL MOUNTAIN OR EQUIVALENT
- 12 CMU SPLIT FACE 4" BLOCK
INTEGRAL COLOR OLDCASTLE #89 BRICK RED
- 13 TOILET WALL VENTS PAINT TO MATCH WALL
- 14 STORE ADDRESS - 6" WHITE REFLECTIVE NUMBERS
- 15 SCUPPERS AND DOWNSPOUTS. COLOR: BRONZE.
ADJACENT 4"H. X 6"W. OVERFLOW SCUPPER.
FLOWLINE 2" ABOVE ROOF.
- 16 BOND BEAM AT ROOF LINE
- 17 CORRIGATED PIPE PAINTED AUTOZONE RED
- 18 LEFT WALL SIGN - 42" CHANNEL LETTERS NSTRP
- 19 HVAC UNITS SCREENED BEHIND PARAPET WALL
- 20 FOAM CORNICE COLOR: SW#6091 "RELIABLE WHITE"
- 21 1" VERTICAL AND HORIZONTAL V-GROVE
SCORED JOINTS (TYP.)
- 22 CMU SMOOTH FACE 4" BLOCK
INTEGRAL COLOR OLDCASTLE #15 SANDSTONE YELLOW
- 23 CMU SMOOTH FACE 8" BLOCK
INTEGRAL COLOR OLDCASTLE #15 SANDSTONE YELLOW
- 24 4'-0" X 4" PILASTER
- 25 POCKET WINDOW EVERGREEN TINTED
- 66% TRANSMITTANCE
- 26 EVERGREEN TINTED STOREFRONT
- 66% TRANSMITTANCE
- 27 4'-0" X 3'-0" PILASTER

ELEVATION KEYNOTES



EXTERIOR SCHEME AT PILASTER

CE1

Color Elevation
AutoZone Store #5177
GREENWOOD, IN

